

Passenger Cars

Engine Identification

CHRYSLER CORPORATION

1984 - 2008 Model Years

Model Year	Engine V.I.N.	Cylinder Displacement	Description
91-96	A	4 Cyl. / 1.5L	EFI
1988	P	4 Cyl. / 1.5L	EFI
89-90	X	4 Cyl. / 1.5L	EFI
84-88	F	4 Cyl. / 1.6L	Turbo
89-90	Y	4 Cyl. / 1.6L	EFI
1989	Z	4 Cyl. / 1.6L	Turbo
93-94	B	4 Cyl. / 1.8L	EFI
93-96	C	4 Cyl. / 1.8L	EFI
07-08	C	4 Cyl. / 1.8L	EFI
1992	D	4 Cyl. / 1.8L	EFI
89-92	T	4 Cyl. / 1.8L	EFI
07-08	B	4 Cyl. / 2.0L	EFI
94-05	C	4 Cyl. / 2.0L	EFI
93-94	E	4 Cyl. / 2.0L	EFI
93-98	F	4 Cyl. / 2.0L	Turbo
01-05	F	4 Cyl. / 2.0L	EFI
90-92	R	4 Cyl. / 2.0L	EFI
90-92	U	4 Cyl. / 2.0L	Turbo
89-91	V	4 Cyl. / 2.0L	EFI
95-00	Y	4 Cyl. / 2.0L	EFI
87-89	A	4 Cyl. / 2.2L	Turbo
91-93	A	4 Cyl. / 2.2L	Turbo
1990	C	4 Cyl. / 2.2L	Turbo
85-94	D	4 Cyl. / 2.2L	EFI
84-88	E	4 Cyl. / 2.2L	Turbo
88-89	F	4 Cyl. / 2.2L	EFI
1989	P	4 Cyl. / 2.2L	Turbo
89-90	R	4 Cyl. / 2.2L	Turbo
96-08	B	4 Cyl. / 2.4L	EFI
05-08	E	4 Cyl. / 2.4L	Turbo
2008	F	4 Cyl. / 2.4L	Turbo
93-96	G	4 Cyl. / 2.4L	EFI
2002	G	4 Cyl. / 2.4L	EFI
03-06	G	4 Cyl. / 2.4L	Turbo
07-08	K	4 Cyl. / 2.4L	EFI
04-05	S	4 Cyl. / 2.4L	Turbo
90-92	W	4 Cyl. / 2.4L	EFI
95-06	X	4 Cyl. / 2.4L	EFI
1989	H	4 Cyl. / 2.5L	EFI
89-92	J	4 Cyl. / 2.5L	Turbo
86-95	K	4 Cyl. / 2.5L	EFI
93-94	V	4 Cyl. / 2.5L	Flex
1988	Z	4 Cyl. / 2.5L	EFI
84-87	H	4 Cyl. / 2.6L	Turbo
85-89	N	4 Cyl. / 2.6L	Turbo

Model Year	Engine V.I.N.	Cylinder Displacement	Description
95-00	H	6 Cyl. / 2.5L	EFI
95-00	N	6 Cyl. / 2.5L	EFI
98-08	R	6 Cyl. / 2.7L	EFI
04-06	T	6 Cyl. / 2.7L	Flex
06-08	T	6 Cyl. / 2.7L	EFI
00-02	U	6 Cyl. / 2.7L	EFI
87-00	3	6 Cyl. / 3.0L	EFI
91-92	B	6 Cyl. / 3.0L	EFI
91-92	C	6 Cyl. / 3.0L	Turbo
93-96	H	6 Cyl. / 3.0L	EFI
01-05	H	6 Cyl. / 3.0L	EFI
1988	J	6 Cyl. / 3.0L	EFI
93-96	J	6 Cyl. / 3.0L	EFI
93-96	K	6 Cyl. / 3.0L	Turbo
89-92	S	6 Cyl. / 3.0L	EFI
89-92	U	6 Cyl. / 3.0L	EFI
98-01	J	6 Cyl. / 3.2L	EFI
04-08	L	6 Cyl. / 3.2L	EFI
01-06	3	6 Cyl. / 3.3L	Flex
98-07	G	6 Cyl. / 3.3L	Flex
90-07	R	6 Cyl. / 3.3L	EFI
03-04	S	6 Cyl. / 3.3L	Flex
93-97	T	6 Cyl. / 3.3L	EFI
94-95	U	6 Cyl. / 3.3L	Flex
04-06	4	6 Cyl. / 3.5L	EFI
93-97	F	6 Cyl. / 3.5L	EFI
99-08	G	6 Cyl. / 3.5L	EFI
03-04	K	6 Cyl. / 3.5L	EFI
02-08	M	6 Cyl. / 3.5L	EFI
03-08	V	6 Cyl. / 3.5L	EFI
91-08	L	6 Cyl. / 3.8L	EFI
2008	P	6 Cyl. / 3.8L	EFI
07-08	X	6 Cyl. / 4.0L	EFI
07-08	L	8 Cyl. / 4.7L	EFI
07-08	N	8 Cyl. / 4.7L	EFI
05-08	2	8 Cyl. / 5.7L	EFI
05-08	H	8 Cyl. / 5.7L	EFI
06-08	3	8 Cyl. / 6.1L	EFI
06-08	W	8 Cyl. / 6.1L	EFI
92-02	E	10 Cyl. / 8.0L	EFI
03-06	Z	10 Cyl. / 8.3L	EFI
2008	Z	10 Cyl. / 8.4L	EFI

Passenger Cars

Engine Identification

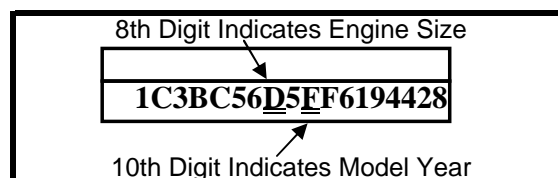
FORD MOTOR COMPANY

1984 - 2008 Model Years

Model Year	Engine V.I.N.	Cylinder Displacement	Description
95-97	H	4 Cyl. / 1.3L	EFI
91-94	H	4 Cyl. / 1.3L	EFI
1985	5	4 Cyl. / 1.6L	EFI
92-94	6	4 Cyl. / 1.6L	16 Valve Turbo
1991	6	4 Cyl. / 1.6L	EFI
1991	8	4 Cyl. / 1.6L	Turbo
93-94	Z	4 Cyl. / 1.6L	DOHC
91-92	Z	4 Cyl. / 1.6L	EFI
92-95	8	4 Cyl. / 1.8L	DOHC
91-96	8	4 Cyl. / 1.8L	EFI
1991	9	4 Cyl. / 1.9L	CFI
87-96	J	4 Cyl. / 1.9L	EFI
95-04	3	4 Cyl. / 2.0L	DOHC
02-04	5	4 Cyl. / 2.0L	EFI
2002	9	4 Cyl. / 2.0L	EFI - Zetec
93-97	A	4 Cyl. / 2.0L	DOHC 16 Valve
05-08	N	4 Cyl. / 2.0L	EFI
97-04	P	4 Cyl. / 2.0L	EFI
98-00	Z	4 Cyl. / 2.0L	CNG
89-92	C	4 Cyl. / 2.2L	EFI
91-92	L	4 Cyl. / 2.2L	Turbo
87-97	A	4 Cyl. / 2.3L	EFI
91-93	M	4 Cyl. / 2.3L	EFI
88-91	S	4 Cyl. / 2.3L	EFI
84-88	T	4 Cyl. / 2.3L	Turbo
85-87	W	4 Cyl. / 2.3L	EFI
88-95	X	4 Cyl. / 2.3L	EFI
04-08	Z	4 Cyl. / 2.3L	EFI
86-91	D	4 Cyl. / 2.5L	EFI
1991	N	4 Cyl. / 2.5L	EFI
93-99	B	6 Cyl. / 2.5L	DOHC
98-00	G	6 Cyl. / 2.5L	DOHC 24 Valve
95-00	L	6 Cyl. / 2.5L	DOHC
1991	V	6 Cyl. / 2.9L	EFI
05-08	1	6 Cyl. / 3.0L	EFI
97-99	1	6 Cyl. / 3.0L	EFI
93-95	1	6 Cyl. / 3.0L	EFI
2006	2	6 Cyl. / 3.0L	Flex
96-05	2	6 Cyl. / 3.0L	EFI
96-05	S	6 Cyl. / 3.0L	DOHC
86-07	U	6 Cyl. / 3.0L	EFI
90-95	Y	6 Cyl. / 3.0L	DOHC
1996	Z	6 Cyl. / 3.0L	EFI
93-95	P	6 Cyl. / 3.2L	DOHC 24 Valve
07-08	C	6 Cyl. / 3.5L	EFI
2008	W	6 Cyl. / 3.5L	EFI
85-87	3	6 Cyl. / 3.8L	EFI
88-04	4	6 Cyl. / 3.8L	EFI

Model Year	Engine V.I.N.	Cylinder Displacement	Description
90-95	R	6 Cyl. / 3.8L	Supercharged
2004	6	6 Cyl. / 3.9L	EFI
00-02	A	6 Cyl. / 3.9L	EFI
05-08	N	6 Cyl. / 4.0L	EFI
96-99	N	8 Cyl. / 3.4L	EFI
03-06	A	8 Cyl. / 3.9L	EFI
1996	6	8 Cyl. / 4.6L	EFI
96-03	9	8 Cyl. / 4.6L	CNG
05-08	H	8 Cyl. / 4.6L	SOHC
03-04	R	8 Cyl. / 4.6L	EFI
06-08	V	8 Cyl. / 4.6L	Flex
93-02	V	8 Cyl. / 4.6L	DOHC
91-08	W	8 Cyl. / 4.6L	SOHC
96-04	X	8 Cyl. / 4.6L	SOHC
03-04	Y	8 Cyl. / 4.6L	DOHC SC
94-95	D	8 Cyl. / 5.0L	EFI
87-93	E	8 Cyl. / 5.0L	EFI
85-91	F	8 Cyl. / 5.0L	EFI
1993	G	8 Cyl. / 5.0L	EFI
85-90	M	8 Cyl. / 5.0L	EFI
91-95	T	8 Cyl. / 5.0L	EFI
05-08	S	8 Cyl. / 5.4L	SC
87-89	G	8 Cyl. / 5.8L	EFI

MODEL YEAR DESIGNATION			
F	1985	V	1997
G	1986	W	1998
H	1987	X	1999
J	1988	Y	2000
K	1989	1	2001
L	1990	2	2002
M	1991	3	2003
N	1992	4	2004
P	1993	5	2005
R	1994	6	2006
S	1995	7	2007
T	1996	8	2008



Passenger Cars

Engine Identification

GENERAL MOTORS

1982 - 2008 Model Years

Model Year	Engine V.I.N.	Cylinder Displacement	Description
87-91	2	3 Cyl. / 1.0L	MPI
98-02	2	4 Cyl. / 1.3L	MPI
92-97	9	4 Cyl. / 1.3L	MPI
87-88	9	4 Cyl. / 1.5L	MPI
88-92	5	4 Cyl. / 1.6L	MPI
06-08	6	4 Cyl. / 1.6L	MPI
88-98	6	4 Cyl. / 1.6L	MPI
1991	8	4 Cyl. / 1.6L	MPI
1992	9	4 Cyl. / 1.6L	MPI
1986	K	4 Cyl. / 1.6L	MPI
93-06	8	4 Cyl. / 1.8L	MPI
84-86	J	4 Cyl. / 1.8L	MPI
2005	L	4 Cyl. / 1.8L	MPI
82-86	O	4 Cyl. / 1.8L	TBI
91-94	9	4 Cyl. / 1.9L	TBI
86-89	1	4 Cyl. / 2.0L	TBI
92-94	H	4 Cyl. / 2.0L	MPI
87-91	K	4 Cyl. / 2.0L	TBI
87-90	M	4 Cyl. / 2.0L	TBI
83-86	P	4 Cyl. / 2.0L	TBI
05-06	P	4 Cyl. / 2.0L	MPI
2008	X	4 Cyl. / 2.0L	MPI
92-02	4	4 Cyl. / 2.2L	MPI
03-05	6	4 Cyl. / 2.2L	MPI
2006	B	4 Cyl. / 2.2L	MPI
06-08	D	4 Cyl. / 2.2L	MPI
02-08	F	4 Cyl. / 2.2L	MPI
90-91	G	4 Cyl. / 2.2L	TBI
89-94	A	4 Cyl. / 2.3L	MPI
87-95	D	4 Cyl. / 2.3L	MPI
2008	5	4 Cyl. / 2.2L	Hybrid
06-08	B	4 Cyl. / 2.4L	MPI
96-04	T	4 Cyl. / 2.4L	MPI
82-86	2	4 Cyl. / 2.5L	TBI
82-92	R	4 Cyl. / 2.5L	TBI
85-91	U	4 Cyl. / 2.5L	TBI
85-88	9	6 Cyl. / 2.8L	MPI
85-89	S	6 Cyl. / 2.8L	MPI
2006	T	6 Cyl. / 2.8L	MPI
85-89	W	6 Cyl. / 2.8L	MPI
85-88	L	6 Cyl. / 3.0L	MPI
97-02	R	6 Cyl. / 3.0L	MPI
99-05	J	6 Cyl. / 3.1L	SFI
93-99	M	6 Cyl. / 3.1L	MPI
88-94	T	6 Cyl. / 3.1L	MPI
1993	W	6 Cyl. / 3.1L	MPI
89-93	N	6 Cyl. / 3.3L	MPI
99-05	E	6 Cyl. / 3.4L	MPI
93-95	S	6 Cyl. / 3.4L	MPI
91-97	X	6 Cyl. / 3.4L	MPI
04-06	8	6 Cyl. / 3.5L	MPI
99-02	H	6 Cyl. / 3.5L	MPI
06-08	K	6 Cyl. / 3.5L	MPI

Model Year	Engine V.I.N.	Cylinder Displacement	Description
06-08	N	6 Cyl. / 3.5L	MPI
05-08	7	6 Cyl. / 3.6L	MPI
2008	V	6 Cyl. / 3.6L	MPI
92-07	1	6 Cyl. / 3.8L	MPI / SC
05-08	2	6 Cyl. / 3.8L	MPI
84-88	3	6 Cyl. / 3.8L	MPI
05-06	4	6 Cyl. / 3.8L	MPI
86-87	7	6 Cyl. / 3.8L	MPI
1989	7	6 Cyl. / 3.8L	MPI
2005	7	6 Cyl. / 3.8L	MPI
84-86	9	6 Cyl. / 3.8L	MPI
1986	B	6 Cyl. / 3.8L	MPI
88-91	C	6 Cyl. / 3.8L	MPI
95-05	K	6 Cyl. / 3.8L	MPI
90-95	L	6 Cyl. / 3.8L	MPI
2006	1	6 Cyl. / 3.9L	MPI
2008	3	6 Cyl. / 3.9L	MPI
2007	R	6 Cyl. / 3.9L	MPI
87-88	7	6 Cyl. / 4.1L	MPI
04-06	S	6 Cyl. / 4.2L	MPI
92-02	W	6 Cyl. / 4.3L	CPI
96-02	X	6 Cyl. / 4.3L	MPI
85-90	Z	6 Cyl. / 4.3L	TBI
92-93	Z	6 Cyl. / 4.3L	TBI
95-02	C	8 Cyl. / 4.0L	MPI
82-87	8	8 Cyl. / 4.1L	DFI
94-96	W	8 Cyl. / 4.3L	MPI
06-08	D	8 Cyl. / 4.4L	MPI
1990	3	8 Cyl. / 4.5L	MPI
88-89	5	8 Cyl. / 4.5L	TBI
89-92	8	8 Cyl. / 4.5L	MPI
93-08	9	8 Cyl. / 4.6L	MPI
04-08	A	8 Cyl. / 4.6L	MPI
96-07	Y	8 Cyl. / 4.6L	MPI
93-98	9	8 Cyl. / 4.8L	MPI
91-95	B	8 Cyl. / 4.9L	MPI
1982	7	8 Cyl. / 5.0L	TBI
88-93	E	8 Cyl. / 5.0L	TBI
85-92	F	8 Cyl. / 5.0L	MPI / TPI
1983	S	8 Cyl. / 5.0L	TBI
06-08	C	8 Cyl. / 5.3L	MPI
04-05	P	8 Cyl. / 5.3L	MPI
2006	M	8 Cyl. / 5.3L	MPI
89-93	7	8 Cyl. / 5.7L	TBI
86-91	8	8 Cyl. / 5.7L	MPI
97-04	G	8 Cyl. / 5.7L	MPI
90-95	J	8 Cyl. / 5.7L	MPI
92-97	P	8 Cyl. / 5.7L	MPI
01-05	S	8 Cyl. / 5.7L	MPI
05-06	U	8 Cyl. / 6.0L	MPI
2008	W	8 Cyl. / 6.2L	MPI
06-08	E	8 Cyl. / 7.0L	MPI

Passenger Cars

Engine Identification

JEEP CORPORATION

1986 - 2008 Model Years

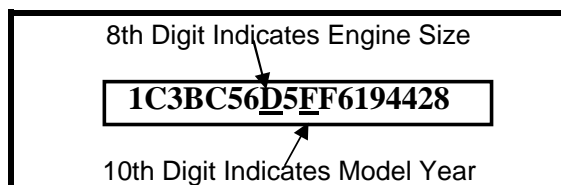
Model Year	Engine V.I.N.	Cylinder Displacement	Description
------------	---------------	-----------------------	-------------

Jeep Eagle (Alliance)			
88-83	D	4 Cyl. / 1.4L	EFI
86-85	A	4 Cyl. / 1.7L	EFI
Chrysler Jeep			
2008	0	4 Cyl. / 2.0L	EFI
02-06	1	4 Cyl. / 2.4L	EFI
07-08	W	4 Cyl. / 2.4L	EFI
89-90	E	4 Cyl. / 2.5L	EFI
86-88	H	4 Cyl. / 2.5L	EFI
91-05	P	4 Cyl. / 2.5L	EFI
05-06	5	4 Cyl. / 2.8L	Diesel
07-08	M	6 Cyl. / 3.0L	Diesel
02-08	K	6 Cyl. / 3.7L	EFI
07-08	1	6 Cyl. / 3.8L	EFI
89-90	L	6 Cyl. / 4.0L	EFI
87-88	M	6 Cyl. / 4.0L	EFI
91-06	S	6 Cyl. / 4.0L	EFI
03-04	J	8 Cyl. / 4.7L	EFI
99-08	N	8 Cyl. / 4.7L	EFI
93-98	Y	8 Cyl. / 5.2L	EFI
05-08	2	8 Cyl. / 5.7L	EFI
1998	Z	8 Cyl. / 5.6L	EFI
06-08	3	8 Cyl. / 6.1L	EFI

Alliance engine size is indicated by the 7th digit of the VIN

1995-1989 Jeep engine sizes are indicated by the 8th digit of the VIN

1988-1987 Jeep engine sizes are indicated by the 4th digit of the VIN



Truck & Van

CHRYSLER CORPORATION

1986 - 2008 Model Years

Model Year	Engine V.I.N.	Cylinder Displacement	Description
------------	---------------	-----------------------	-------------

1993	G	4 Cyl. / 2.4L	EFI
90-92	W	4 Cyl. / 2.4L	EFI
89-95	G	4 Cyl. / 2.5L	EFI
87-88	K	4 Cyl. / 2.5L	EFI
96-01	P	4 Cyl. / 2.5L	EFI
2006	4	5 Cyl. / 2.7L	Diesel
89-92	S	6 Cyl. / 3.0L	EFI
02-08	K	6 Cyl. / 3.7L	EFI
88-03	X	6 Cyl. / 3.9L	EFI
07-08	6	6 Cyl. / 4.0L	EFI
07-08	A	6 Cyl. / 6.7L	Diesel
05-07	J	8 Cyl. / 4.7L	EFI
00-08	N	8 Cyl. / 4.7L	EFI
88-03	Y	8 Cyl. / 5.2L	EFI
06-08	2	8 Cyl. / 5.7L	EFI
03-08	D	8 Cyl. / 5.7L	EFI
2006	Z	8 Cyl. / 5.7L	EFI
89-02	5	8 Cyl. / 5.9L	EFI
98-05	6	8 Cyl. / 5.9L	Diesel
2001	7	8 Cyl. / 5.9L	Diesel
94-96	C	8 Cyl. / 5.9L	Diesel
02-08	C	8 Cyl. / 5.9L	Diesel
94-99	D	8 Cyl. / 5.9L	Diesel
89-03	Z	8 Cyl. / 5.9L	EFI
94-04	W	10 Cyl. / 8.0L	EFI
04-05	Z	10 Cyl. / 8.3L	EFI
2006	H	10 Cyl. / 8.3L	EFI

MODEL YEAR DESIGNATION

F	1985	V	1997
G	1986	W	1998
H	1987	X	1999
J	1988	Y	2000
K	1989	1	2001
L	1990	2	2002
M	1991	3	2003
N	1992	4	2004
P	1993	5	2005
R	1994	6	2006
S	1995	7	2007
T	1996	8	2008

Truck & Van

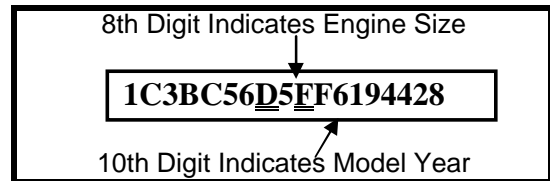
Engine Identification

FORD MOTOR COMPANY

1988 - 2008 Model Years

Model Year	Engine V.I.N.	Cylinder Displacement	Description
00-04	B	4 Cyl. / 2.0L	SFI
91-97	A	4 Cyl. / 2.3L	MPI
05-08	D	4 Cyl. / 2.3L	MPI
05-06	H	4 Cyl. / 2.3L	Hybrid
05-08	Z	4 Cyl. / 2.3L	MPI
98-02	C	4 Cyl. / 2.5L	MPI
91-04	T	6 Cyl. / 2.9L	MPI
97-08	1	6 Cyl. / 3.0L	MPI
91-08	U	6 Cyl. / 3.0L	MPI
1999	T	6 Cyl. / 3.3L	MPI
96-04	4	6 Cyl. / 3.8L	MPI
05-06	6	6 Cyl. / 3.9L	MPI
97-08	E	6 Cyl. / 4.0L	MPI
00-01	K	6 Cyl. / 4.0L	MPI
05-08	K	6 Cyl. / 4.0L	Flex
91-01	X	6 Cyl. / 4.0L	MPI
97-08	2	6 Cyl. / 4.2L	MPI
93-97	9	6 Cyl. / 4.9L	MPI
91-97	Y	6 Cyl. / 4.9L	MPI
96-97	Z	6 Cyl. / 4.9L	MPI
97-00	6	8 Cyl. / 4.6L	MPI
06-08	8	8 Cyl. / 4.6L	MPI
97-06	W	8 Cyl. / 4.6L	MPI
05-08	W	8 Cyl. / 4.6L	SOHC
91-97	N	8 Cyl. / 5.0L	MPI
96-01	P	8 Cyl. / 5.0L	MPI
00-04	3	8 Cyl. / 5.4L	MPI/SC
05-08	5	8 Cyl. / 5.4L	SOHC
92-08	L	8 Cyl. / 5.4L	MPI
00-05	M	8 Cyl. / 5.4L	CNG
00-02	Z	8 Cyl. / 5.4L	PROP
91-98	H	8 Cyl. / 5.8L	MPI
93-95	R	8 Cyl. / 5.8L	MPI
88-02	F	8 Cyl. / 7.3L	Diesel
91-98	G	8 Cyl. / 7.5L	MPI
92-06	S	10 Cyl. / 6.8L	MPI
05-06	V	10 Cyl. / 6.8L	MPI
06-08	Y	10 Cyl. / 6.8L	MPI

MODEL YEAR DESIGNATION			
F	1985	V	1997
G	1986	W	1998
H	1987	X	1999
J	1988	Y	2000
K	1989	1	2001
L	1990	2	2002
M	1991	3	2003
N	1992	4	2004
P	1993	5	2005
R	1994	6	2006
S	1995	7	2007
T	1996	8	2008



Truck & Van

Engine Identification

GENERAL MOTORS

1985 - 2008 Model Years

Model Year	Engine V.I.N.	Cylinder Displacement	Description
98-02	6	4 Cyl. / 1.6L	MPI
98-03	C	4 Cyl. / 2.0L	MPI
94-99	4	4 Cyl. / 2.2L	MPI
2002	5	4 Cyl. / 2.2L	MPI
2006	F	4 Cyl. / 2.2L	MPI
2003	H	4 Cyl. / 2.2L	MPI
2006	B	4 Cyl. / 2.4L	MPI
91-93	A	4 Cyl. / 2.5L	TBI
85-91	E	4 Cyl. / 2.5L	TBI
05-06	8	4 Cyl. / 2.8L	MPI
07-08	9	4 Cyl. / 2.9L	MPI
05-06	6	5 Cyl. / 3.5L	MPI
07-08	E	5 Cyl. / 3.7L	MPI
01-04	4	6 Cyl. / 2.5L	MPI
86-93	R	6 Cyl. / 2.8L	TBI
90-95	D	6 Cyl. / 3.1L	TBI
96-05	E	6 Cyl. / 3.4L	SFI
05-08	F	6 Cyl. / 3.4L	MPI
2005	8	6 Cyl. / 3.5L	MPI
2006	L	6 Cyl. / 3.5L	MPI
2008	7	6 Cyl. / 3.6L	MPI
93-95	L	6 Cyl. / 3.8L	MPI
06-08	1	6 Cyl. / 3.9L	MPI
2006	L	6 Cyl. / 3.9L	MPI
07-08	W	6 Cyl. / 3.9L	MPI
05-08	S	6 Cyl. / 4.2L	MPI
90-91	B	6 Cyl. / 4.3L	TBI
92-02	W	6 Cyl. / 4.3L	MPI
96-08	X	6 Cyl. / 4.3L	MPI
86-95	Z	6 Cyl. / 4.3L	TBI

Model Year	Engine V.I.N.	Cylinder Displacement	Description
2007	C	8 Cyl. / 4.8L	MPI
99-02	V	8 Cyl. / 4.8L	SFI
03-07	V	8 Cyl. / 4.8L	MPI
92-93	E	8 Cyl. / 5.0L	TBI
87-95	H	8 Cyl. / 5.0L	TBI
96-02	M	8 Cyl. / 5.0L	SFI
2006		8 Cyl. / 5.3L	Hybrid
07-08	3	8 Cyl. / 5.3L	MPI
2008	4	8 Cyl. / 5.3L	MPI
07-08	J	8 Cyl. / 5.3L	MPI
05-07	B	8 Cyl. / 5.3L	HO
05-08	M	8 Cyl. / 5.3L	MPI
03-04	P	8 Cyl. / 5.3L	MPI
06-07	T	8 Cyl. / 5.3L	MPI
99-05	T	8 Cyl. / 5.3L	SFI
03-07	Z	8 Cyl. / 5.3L	Flex
87-96	K	8 Cyl. / 5.7L	TBI
96-02	R	8 Cyl. / 5.7L	CPI/SFI
2006		8 Cyl. / 6.0L	CNG
05-08	H	8 Cyl. / 6.0L	MPI
2008	K	8 Cyl. / 6.0L	MPI
03-07	N	8 Cyl. / 6.0L	MPI
99-07	U	8 Cyl. / 6.0L	MPI/SFI
07-08	Y	8 Cyl. / 6.0L	MPI
07-08	8	8 Cyl. / 6.2L	MPI
92-02	F	8 Cyl. / 6.5L	Diesel
01-04	1	8 Cyl. / 6.6L	Diesel
04-07	2	8 Cyl. / 6.6L	Diesel
07-08	6	8 Cyl. / 6.6L	Diesel
98-99	B	8 Cyl. / 7.4L	MPI
96-02	J	8 Cyl. / 7.4L	MPI/SFI
87-97	N	8 Cyl. / 7.4L	TBI
00-07	G	8 Cyl. / 8.1L	MPI/SFI

